



Ebi3 Polyclonal Antibody

Catalog No	YP-Ab-16059
Isotype	IgG
Reactivity	Human;Mouse
Applications	WB;ELISA
Gene Name	EBI3
Protein Name	Interleukin-27 subunit beta
Immunogen	The antiserum was produced against synthesized peptide derived from the Internal region of human EBI3. AA range:101-150
Specificity	Ebi3 Polyclonal Antibody detects endogenous levels of Ebi3 protein.
Formulation	Liquid in PBS containing 50% glycerol, 0.5% BSA and 0.02% sodium azide.
Source	Polyclonal, Rabbit,IgG
Purification	The antibody was affinity-purified from rabbit antiserum by affinity-chromatography using epitope-specific immunogen.
Dilution	Western Blot: 1/500 - 1/2000. ELISA: 1/10000. Not yet tested in other applications.
Concentration	1 mg/ml
Purity	≥90%
Storage Stability	-20°C/1 year
Synonyms	EBI3; IL27B; Interleukin-27 subunit beta; IL-27 subunit beta; IL-27B; Epstein-Barr virus-induced gene 3 protein; EBV-induced gene 3 protein
Observed Band	25kD
Cell Pathway	Secreted .
Tissue Specificity	B-cell,Pancreas,
Function	function:Cytokine with pro- and anti-inflammatory properties, that can regulate T helper cell development, suppress T-cell proliferation, stimulate cytotoxic T cell activity, induce isotype switching in B-cells, and that has diverse effects on innate immune cells. Among its target cells are CD4 T helper cells which can differentiate in type 1 effector cells (TH1), type 2 effector cells (TH2) and IL17 producing helper T-cells (TH17). It drives rapid clonal expansion of naive but not memory CD4 T-cells. It also strongly synergizes with IL-12 to trigger interferon-gamma/IFN-gamma production of naive CD4 T-cells, binds to the cytokine receptor WSX-1/TCCR. Another important role of IL27 is its antitumor activity as well as its antiangiogenic activity with activation of production of antiangiogenic chemokines.,induction:By EBV.,online information:Interleukin-27 entry,similarity:Belongs to the

**Background**

This gene was identified by its induced expression in B lymphocytes in response Epstein-Barr virus infection. It encodes a secreted glycoprotein belonging to the hematopoietin receptor family, and heterodimerizes with a 28 kDa protein to form interleukin 27 (IL-27). IL-27 regulates T cell and inflammatory responses, in part by activating the Jak/STAT pathway of CD4+ T cells. [provided by RefSeq, Sep 2008],

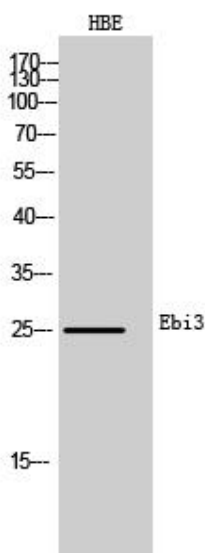
matters needing attention

Avoid repeated freezing and thawing!

Usage suggestions

This product can be used in immunological reaction related experiments. For more information, please consult technical personnel.

Products Images



Western Blot analysis of HBE cells using Ebi3 Polyclonal Antibody. Secondary antibody(catalog#:RS0002) was diluted at 1:20000